

FFP Customs Billet Upper Adjustable Seat Mount Extension Instructions



It is said that necessity is the mother of invention. When FFP customers needed a solution to tie our Billet Upper Adjustable Seat Mount to their seat, we came up with this Billet Upper Adjustable Seat Mount Extension.

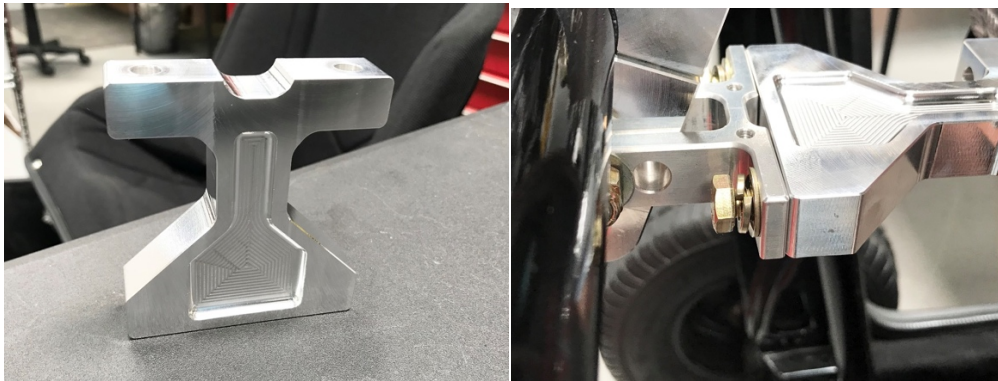
FFP Customs knows that making quality parts is a fluid situation. Meaning, we don't just make one part, and sit back. We are always looking for new product ideas and/or improving our product line. When a need came up for increased adjustment for our Billet Upper Adjustable Seat Mount, this Billet Upper Adjustable Seat Mount Extension was born. Our Billet Upper Adjustable Seat Mount Extension, just like the Billet Upper Adjustable Seat Mount, is made from 6061 aluminum, and includes all mounting hardware. Some hardware from the Billet Upper Adjustable Seat Mount is used to attach it to the Billet Upper Adjustable Seat Mount Extension, but we will spell out all the details needed for installation.

An industry standard just isn't there when it comes to where people mount their seats, or a seatbelt crossbar location. Some seatbelt crossbars are straight across, whereas others angle back for more seat room and then go across to the other upright bar. The seatbelt crossbar's location, along with where your seat is mounted, our Billet Upper Adjustable Seat Mount can satisfy most people's needs. However, for those that really get up on the wheel, a solution was needed, and we made it.

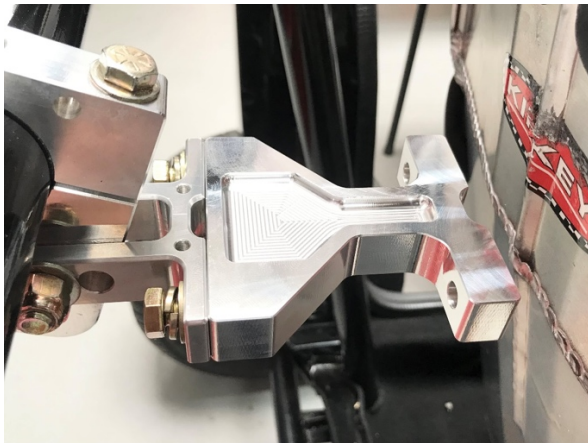


(813) 928-1449

www.FFPCustoms.com



The Billet Upper Adjustable Seat Mount Extension has an indentation in it to match up to the back of the seat. If your seat of choice has the same indentation in it, match it up to the Billet Upper Adjustable Seat Mount Extension, and adjust accordingly. The Billet Upper Adjustable Seat Mount Extension includes these lock washers to be used with the existing seat mount bolts that came with the Billet Upper Adjustable Seat Mount. Those existing seat mount bolts and flat washers are paired with the new lock washers for attachment to the Billet Upper Adjustable Seat Mount. When you receive the Billet Upper Adjustable Seat Mount Extension, the new part includes new bolts, washers, and nuts to attach the extension to the aluminum racing seat.



Once attached to the Billet Upper Adjustable Seat Mount, you can fine-tune the Billet Upper Adjustable Seat Mount Extension's location as it relates to the seat. It's easier to adjust the Billet Upper Adjustable Seat Mount's adjustment tee to fit your application.

The installation of the Billet Upper Adjustable Seat Mount is straightforward. In applications where more adjustment is needed, this extension takes up that space, bolting to the back of the seat and to the Billet Upper Adjustable Seat Mount. This extension will get you up closer to the wheel for maximum steering wheel control and pedal reach to help get you to victory.

Like every FFP Customs product, our Billet Upper Adjustable Seat Mount Extension is designed to bolt on with very little drama. However, if you hit a snag or need any assistance, do not hesitate to call, or reach out to us via social media. We would rather you contact us for clarification instead of being frustrated with the installation.

Proudly Made in the USA

FFP Customs

(813) 928-1449

www.ffpcustoms.com